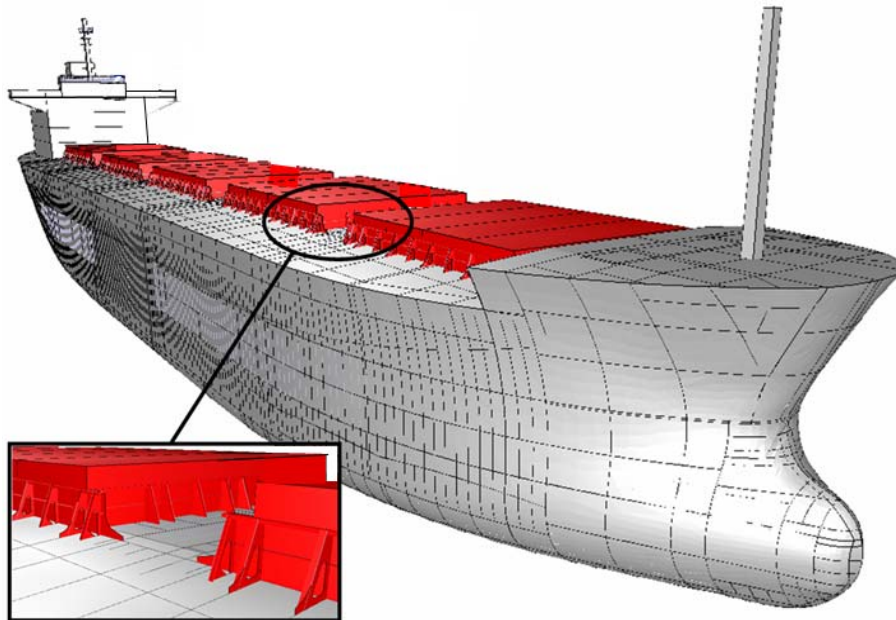
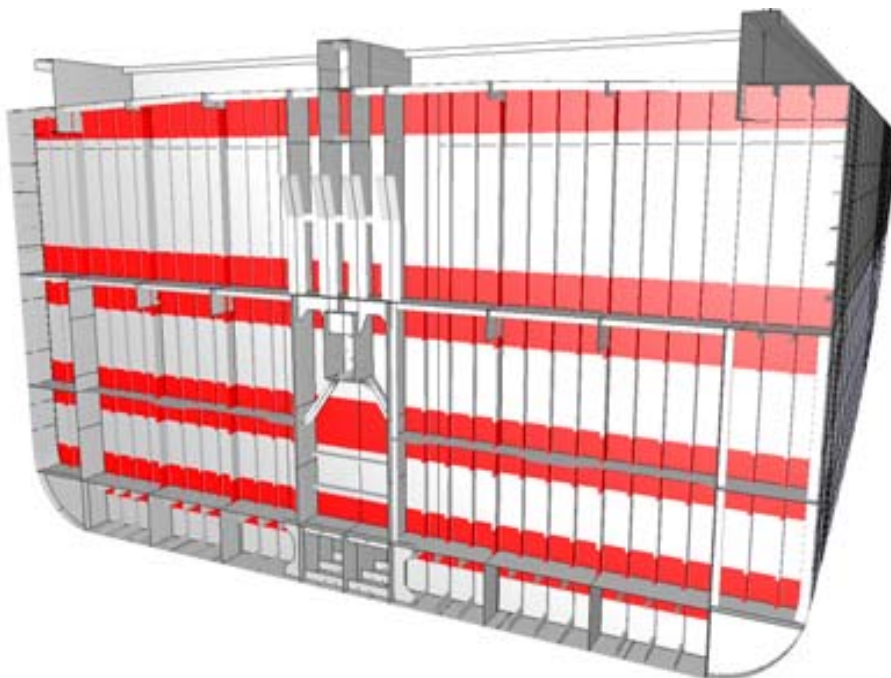


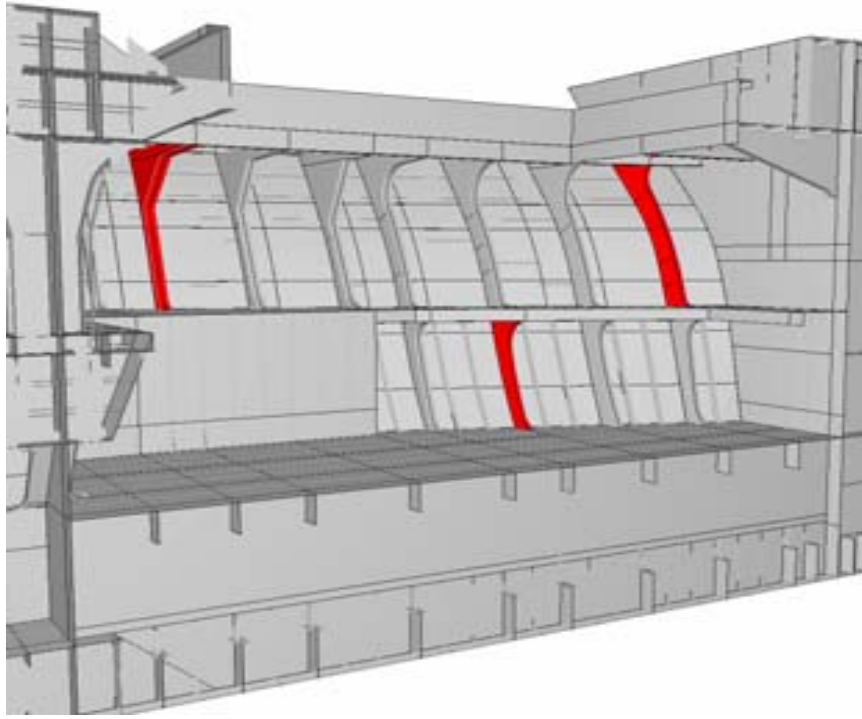
General dry cargo ships 10 years (Renewal Survey no.2)



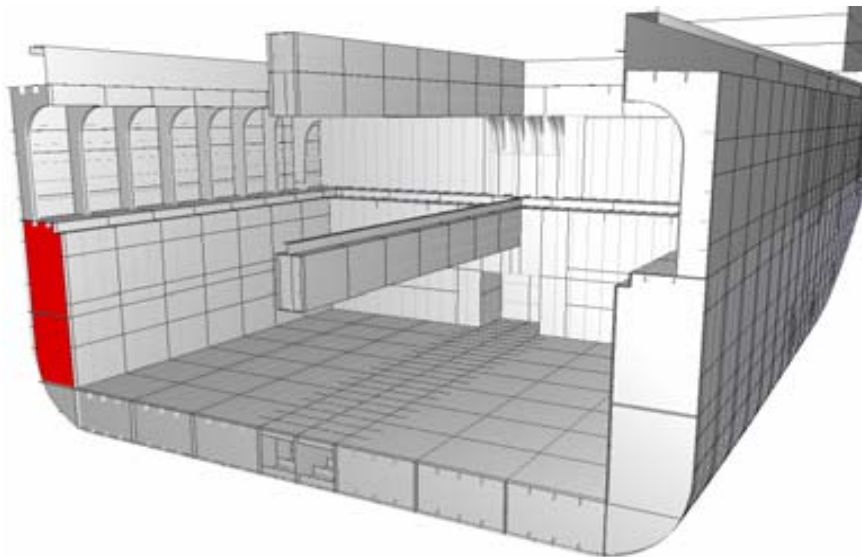
All cargo hold hatch covers and coamings - plating and stiffeners



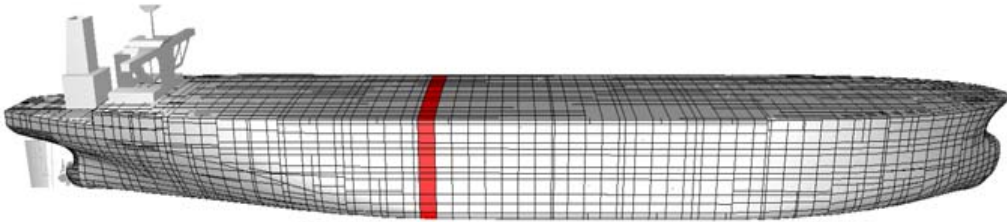
All cargo hold transverse bulkhead plating, stiffeners and girders.



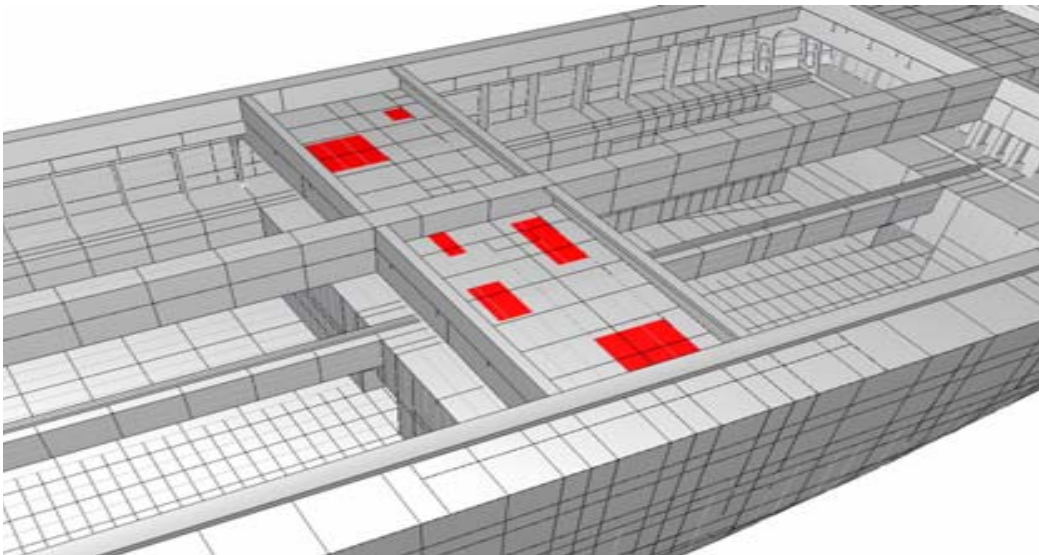
Selected frames in all cargo holds / 'tween deck space.



Forward and aft bulkhead in one side tank.



One section of deck plating only.



Selected deck plating and underdeck structures inside line of hatch openings between cargo hold hatches.