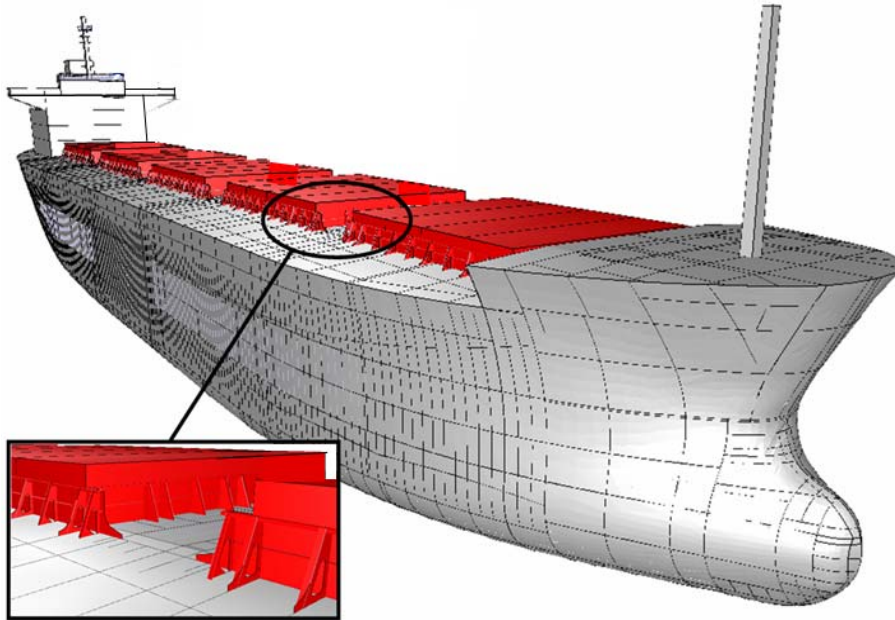


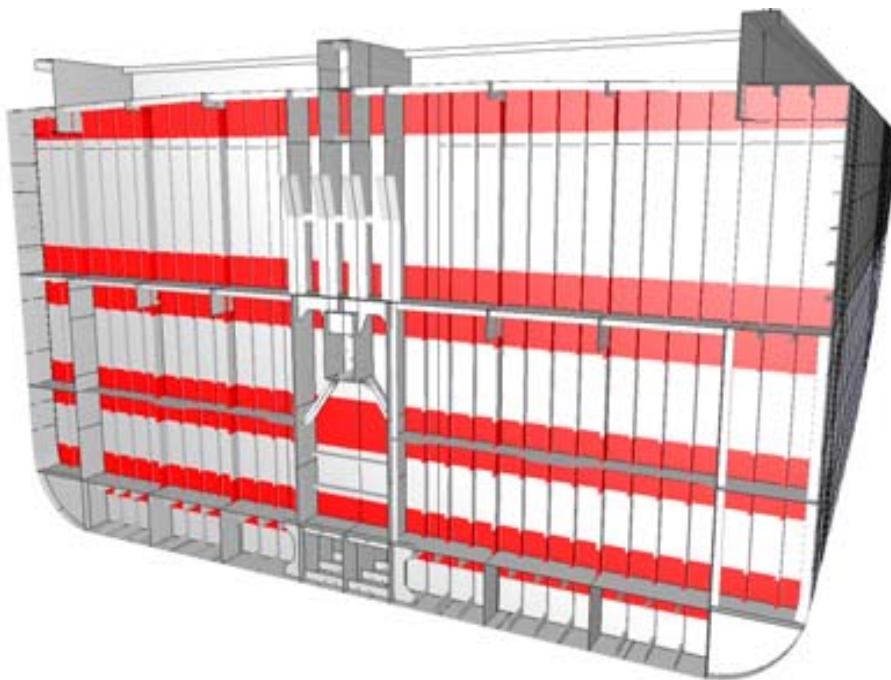


For info and offer please contact:
e-mai: info@eras.ee
cell: +372 56 626 434

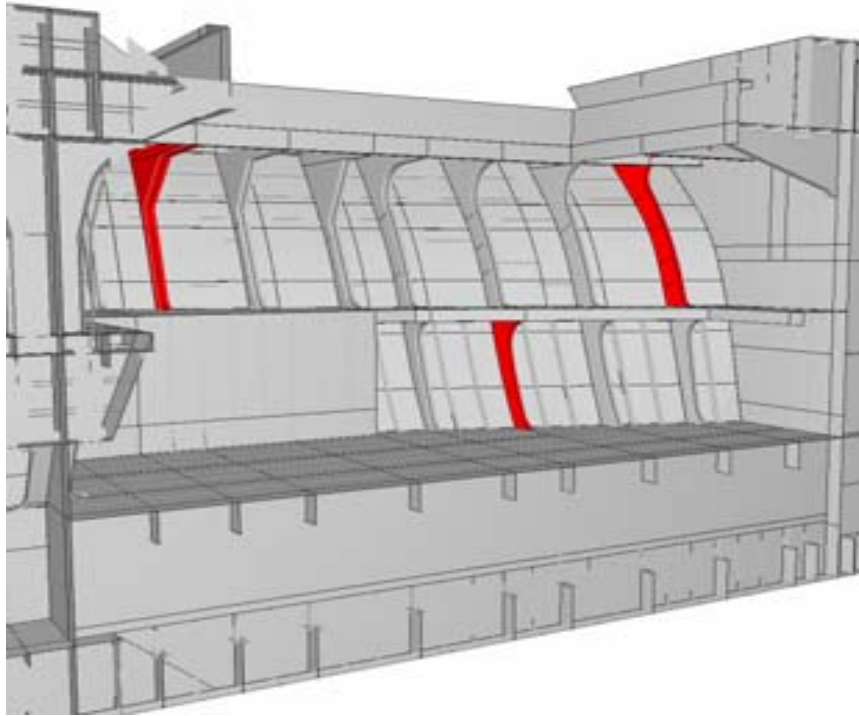
1.2 General dry cargo ships 10 years (Renewal Survey no.2)



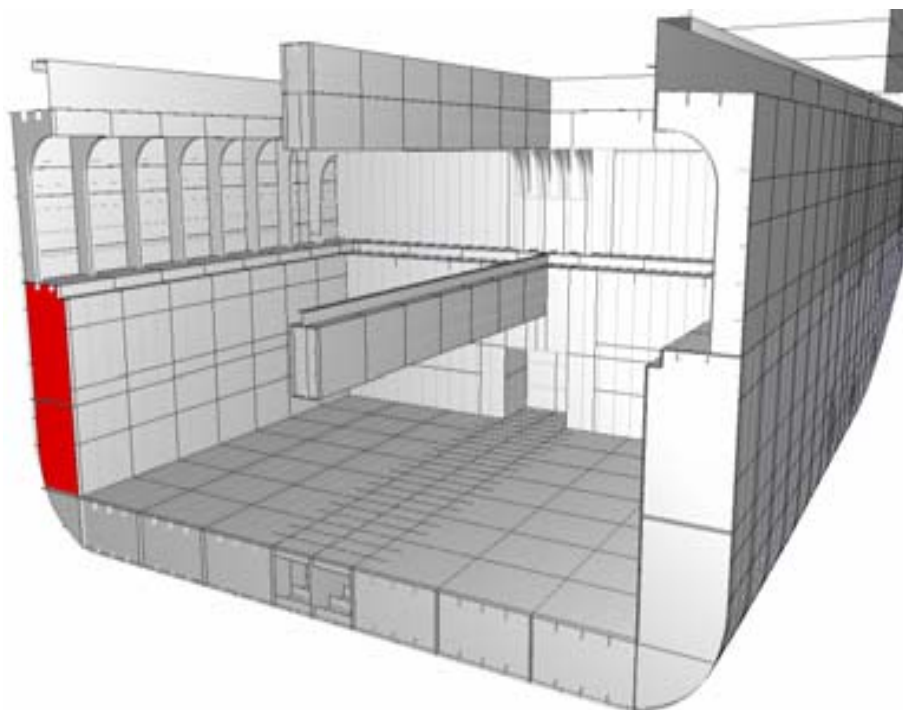
Cargo hold hatch covers and coamings (plating and stiffeners)



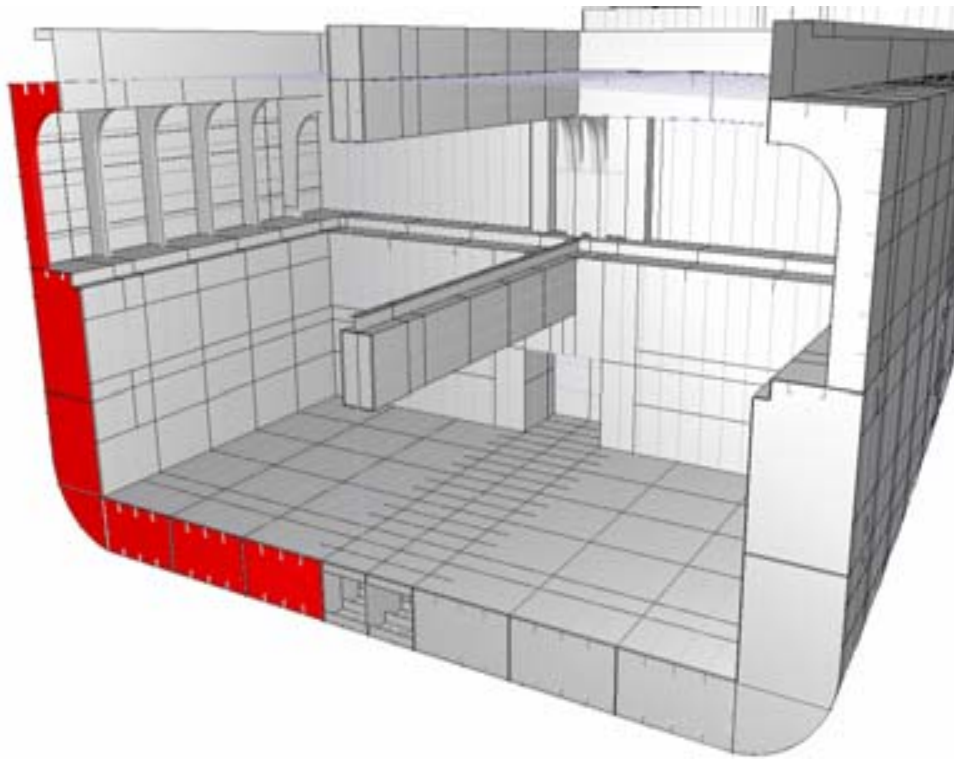
Cargo hold transverse bulkheads- plating, stiffeners and girders.



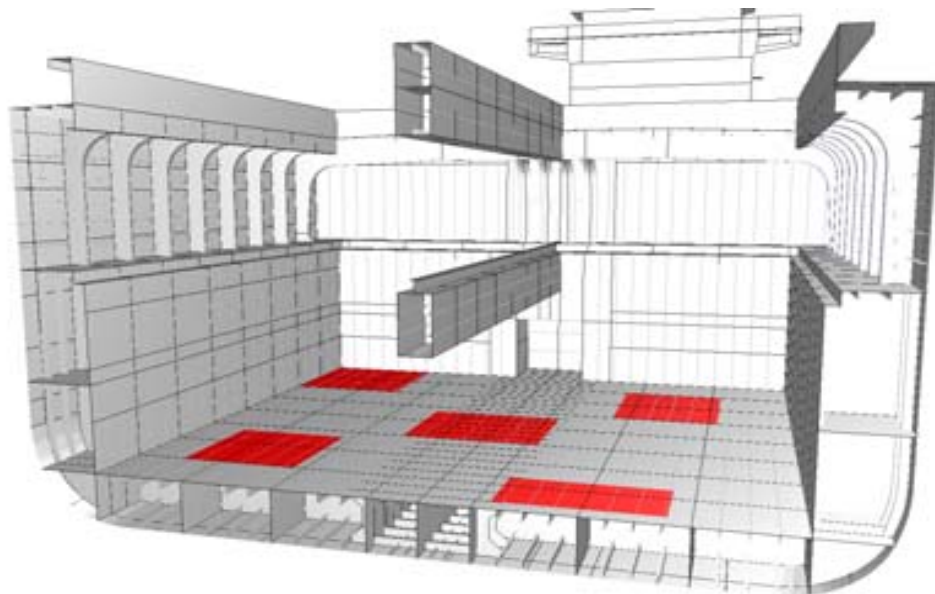
Cargo hold transverse shell frames.



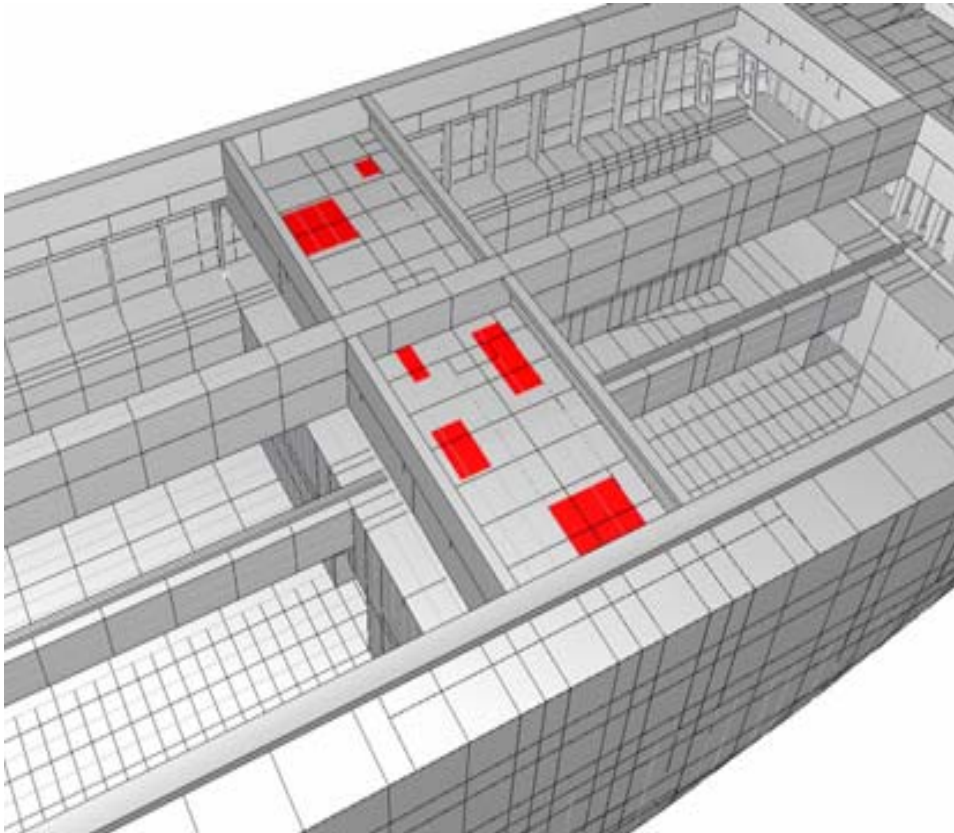
Ballast tanks transverse bulkheads, including stiffening system



Ballast tanks transverse web frames with associated plating and frames.



Inner bottom plating



Deck plating and under deck structure inside line of hatch openings between cargo hold hatches